



DATA SHEET FOR FLP LED TUBE LIGHT FITTING

FLP-WP-TUBE LIGHT LED FITTING IIA & IIB

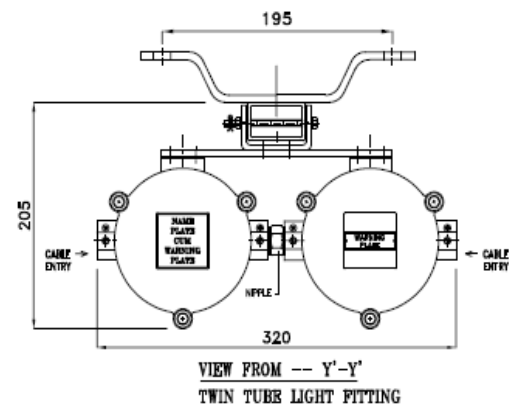
TECHNICAL DATA:

PRODUCT	: CAT. NO.- SUDHIR / 1271
ENCLOSURE	: FLAME PROOF (Ex -d), Gas Group IIA , IIB As per IS/IEC 60079-1 : 2014
PROTECTION	: WEATHER PROOF IP – 66 AS PER IS/IEC 60529:2001
AREA CLASSIFICATION	: Ex db IIB T6 Gb (EX tb IIIC T85 Db) (ZONE 1 & 2 & Zone 21 & 22)
CERTIFICATION	: CIMFR, BIS, PESO
TEMPERATURE CLASS	: T 6
MATERIAL	: DIE CAST ALUMINIUM ALLOY
FINISH	: EPOXY POWDER COATED SHADE AS PER IS : 5
EARTHING	: 1 No INTERNAL & 2 No's EXTERNAL
HARDWARE	: STAINLESS STEEL
GASKET	: 'O' RING ENDLESS GASKET NEOPRENE / SILICON
NAME PLATE	: SS NAME PLATE CUM WARNING PLATE
GLASS	: TUBULAR HEAT RESISTANT CLEAR GLASS
ENTRIES	: 2 Nos M20 / ½ " NPT / EQUIVALENT
VOLTAGE	: 140 V – 270 V (240 V AC)
POWER FACTOR	: ≥ 0.95
INPUT FREQUENCY	: 50 Hz.
EFFICACY	: ≥ 100 LUMEN PER WATT
COLOUR (CCT)	: 3000K / 5700K / 6500 K / OR AS SPECIFIED
SURFACE TEMP.	: MAX . 70°
WIRE GUARD	: MS WHITE EPOXY POWDER COATED.
LED MAKE	: EVERLITE OR EQUIVALENT



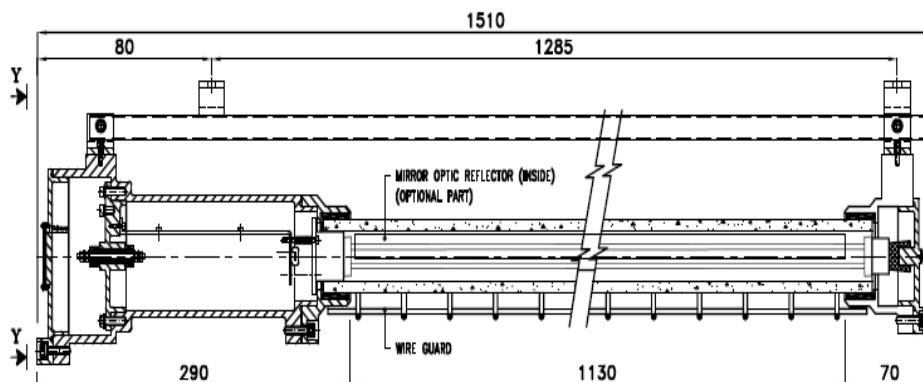
OPTIONS

SR.NO	PARTICULAR	OPTIONS
1.	MATERIAL OF CONSTRUCTION	STAINLESS STEEL
2.	LED TYPE	TUBE ROD
3.	WIRE GUARD	SS
4.	GLAND & PLUG	BRASS / SS / ALUMINIUM
5.	COLOUR SHADE	631, 632, 355, 7031 , 7032 etc..



SELECTION CHART

SR.NO	WATTAGE	SIZE	PART NO
1	1 X 20	4 FEET	SUDHIR /1271 / 1 / 20
2	2 X 20	4 FEET	SUDHIR /1271 / 2 / 20
3	1 X 40	4 FEET	SUDHIR /1271 / 1 / 40
4	2 X 40	4 FEET	SUDHIR /1271 / 2 / 40
5	1 X 10	2 FEET	SUDHIR /1271 / 1 / 10
6	2 X 10	2 FEET	SUDHIR /1271 / 2 / 10



SECTIONAL VIEW OF TUBE LIGHT FITTING